

The 10th Doctor



by

<http://pixelatedmushroom.blogspot.com>



The Tenth Doctor – David Tennant

" Correctamundo! A word I've never used before and hopefully, never will again" (School Reunion – Season 2, Ep 1)

Welcome to PixelatedMushroom's pattern for the Tenth Doctor!

While this pattern only involves simple stitches, the challenge lies in the fact that each Doctor is quite tiny (about 7.5cm tall), so the crochet can be rather intricate work. Step-by-step photos have been taken of the trickier sections. Please feel free to contact me with any troubles or concerns along the way:

pixelatedmushroom@gmail.com

Materials

Tools

- 3mm crochet hook
- Sewing needle (that will fit through the beads)
- Darning needle (for wool)

Beads

- 2 black beads (eyes)

Thread

- Black thread (for sewing on the eyes)
- **Brown embroidery thread (hair)**

Wool

- Pale pink wool (skin)
- White wool (shirt)
- **Blue wool (shirt and pants)**
- **Beige wool (jacket)**
- **Scrap of Red wool (shoes detail)**
- **Scrap of black wool (vest detail)**

Skills Required / Abbreviations

Magic circle (follow this link if you need some extra help <http://freeamigurumipatterns.blogspot.com/2009/03/how-to-crochet-magic-circle-starter.html>)

Ch: chain

Sc: single crochet

Hdc: half-double-crochet (www.youtube.com/watch?v=LxA2osb5Qfk)

Inc: increase (make two single crochet into one stitch)

Dec: decrease

Hdc-dec: half-double-crochet decrease

Slip: slip stitch

If you are having trouble with anything, googling the name of the stitch (eg. half-double-crochet), will help you to find a video demonstrating the stitch

Increasing Instructions

(It's best just to check this section to see that you are reading the increasing instructions correctly)

I have provided visual diagrams (last pages of pattern) as well as written instructions. In terms of the written instructions they can be interpreted as follows.

Inc every st = Increase every stitch

For example: inc, inc, inc, inc, inc, inc

Inc every 2nd st = Increase every second stitch

For example: sc, inc, sc, inc, sc, inc, sc, inc,

Inc every 3rd st = Increase every third stitch

For example: sc, sc, inc, sc, sc, inc, sc, sc, inc,

The Pattern

The head, body and arms are all made in one go, so there is no tedious sewing or worrying about small parts being removable.

Count your stitches after completing each row - mistakes in stitch count can mean your doctors might end up too fat or too skinny, and this will be a problem when you are making his coat.

Head (see diagram 1)

Using skin colour

1) magic circle 6

(insert a safety pin or a scrap of different coloured wool between this stitch and the next to keep track of the row ends)

2) inc all = 12

3) inc every 3rd st = 16

4) sc 1 row

5) sc 1 row

6) sc 1 row

7) dec ev 3rd st = 12

8) dec all = 6

9) sc 1 row

(Carefully stuff the head here)

Shoulders (see diagram 2)

Change to white

10) inc all = 12

Change to blue

11) inc ev 2nd st = 18

(see figure 1)



(figure 1)



(figure 2)

Arm1

12) sc2, change to skin colour, sc4,
 (see figure 2)
 insert hook into 2nd stitch of the row and
 slip1, (see figures 3+4)
 sc the same 5 sts, slip3, skip1 st and
 slip1, (see figures 5+6+7)
 slip stitch up inside of arm to get to the
 other side of the body, (see figure 8)

Arm2

Change to white sc5, (see figures 9+10)
 change to skin colour, sc4, (see figure
 11)
 insert hook into the st 5 before your
 current st and slip,
 sc these 5 sts, slip3, skip 1 st and slip1,
 slst up inside of arm,
 change to white sc3
 (repeat figures 2-11)

Tummy

13) sc2, ch1, sc5, ch1, sc3 = 12
 14) sc2, inc1, sc5, inc1, sc3 = 14
 (Add a little stuffing to the shoulders
 now)

Legs

continue in blue

15) sc3, inc2, sc7, inc2, sc4 = 18
 change to white
 16) sc

Base

17) dec ev 2nd, working into the inside of
 the stitches, leaving the outside loop
 unstitched = 12

(Stuff the rest of the body - do **not** tightly stuff the base of the legs)

18) dec all = 6

Cut off leaving a long tail.



(figure 3)



(figure 4)



(figure 5)



(figure 6)



(figure 7)



(figure 8)



(figure 9)



(figure 10)

Closing the base

- Take your sewing needle and sew this thread through the six sts, pulling tight.

Correcting his height

(The following steps are nothing complicated, he just looks cuter if his head is closer to his body)

- Enter again and go right up inside the body to exit at the top of his head.
- Enter a couple of millimetres beside this point and go through to the feet again. (figure 11)
- Mould the plushie with your fingers until he appears the right proportions, using this thread as a way to adjust how far the head sits above the neck



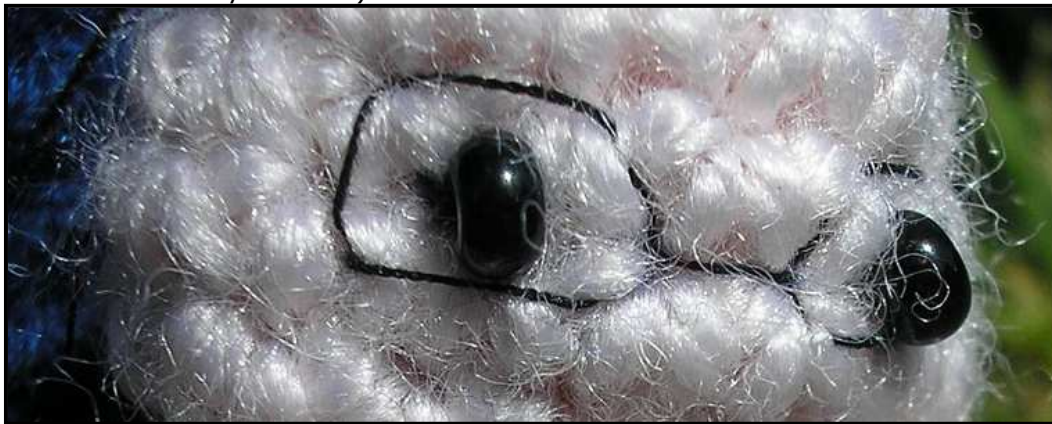


Shaping his pants

- Enter through the base again and exit just above the centre of row 16 (between the two feet if they existed).
 - Enter again a tiny bit lower and exit between his heels at the back of the plushie. Pull this carefully so that the feet are moulded into a bit of a () () shape. Be careful here - test that he still stands upright on his own. If you pull too tightly he will lose balance.
 - Enter through to the crutch area, and pull through to the back (where the bum would be).
- Do as above to make sure he still stands. It should appear that he has pants now, rather than a skirt.
 - Cut off the yarn close to his body.

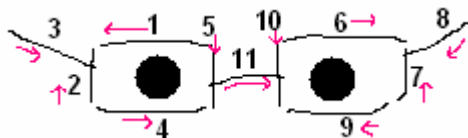
Eyes

- Take a piece of thread and enter through the middle-top of the head. Exit at the fourth row down, slightly to one side. Add one of the beads to the thread and enter again just beside your exit spot.
- Exit about 4 stitches across for the other eye, add the bead and enter again.
- Weave out and in many times to secure the eyes, and when they feel secure, exit the top of the head and tie ends together for extra security (this knot will be covered by the hair).



Glasses

- Thread a needle with black thread and use the stitch diagram below to create the glasses (recommended neatest order is marked),
- Make sure stitch 11 pulls together stitches 5 and 10 for the nice shape you can see in the image above.



Coat (see diagram 3)**Using light brown wool**

- 1) ch14
- 2) sc
- 3) sc
- 4) sc
- 5) sc3, ch5, skip 1 & sc6, ch5, skip1 and sc3 = 22
- 6) dec2, sc6, dec1, sc6, dec2 = 17
- 7) slip6, hdc-dec1, hdc1, hdc-dec1, slip6 = 15

Tie off tightly leaving a tail.

Check that the jacket fits – you will need to pull the Doctor's arms quite forcefully through the sleeves so that it is a tight fit. Remove the jacket again.

Doctor's Suit

Using black wool and a darning needle, add a U shape around the border of the white inner shirt. Following this image, add a T shape above for a tie.

Stitch around the waist to mark the separation between the suit top and pants.

**Feet Details****Using red wool**

Stitch some blanket stitch across the top of each foot to define the Doctor's sneakers.

**Dressing your Doctor**

Put on the Jacket, tugging each arm securely through the arm holes. Sew the bottom centre of the coat together so it looks 'done up'. Cut off any loose ends.

Hair

I based the hair of my Doctors on Geek Central Station's 'short hair tutorial': <http://geekcentralstation.blogspot.com/2008/04/short-hair-tutorial.html>

Please take a look as it is very well illustrated and will be helpful in the steps that follow.

The hair can be a little bit of a challenge.

Top Piece

Take a piece of cardboard measuring 7.5cm x 12cm



Wrap a 1.5metre piece of **light brown embroidery thread** round the horizontal side of the card from one end to the other (not too tightly)

Take a piece of tape and add it to either end of the hair, pressing down lightly enough to hold but so it will come away easily when pulled.
(see image on right)

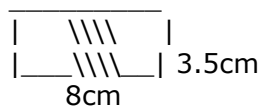
Very carefully remove the cardboard from the centre (you may need to cut it out)

With brown thread, sew down the centre line to make the part of the Doctor's hair.

(You can do this with or without a sewing machine. If you are doing this without a sewing machine, use backstitch and carefully hold the piece flat as you sew. Go over the centre part several times, entering through different parts of the embroidery threads to make sure it holds.

Back Piece

Make another piece the same way, this time using card measuring 4cm x 8cm



Wrap the **light brown embroidery thread** again, but this time tape along the middle and bottom. Remove the cardboard carefully and sew across the top line, sewing both layers together ->

(If you are hand sewing you won't need to remove the cardboard first)

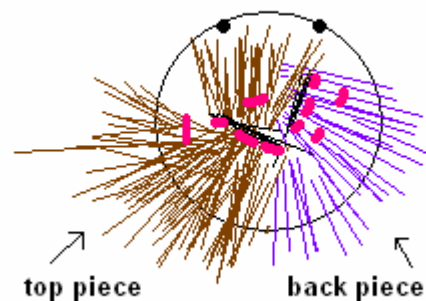
This will form the hair at the right side of the doctor's head (purple in diagram below).

Adding hair to head

Add the back piece first. Use a needle and thread and carefully attach the sewn side to the middle of the head, letting the loose strands hang down over the right side of his head (see purple on diagram)



top of 10's head





Then add the front piece by sewing down the part and letting one end hang as a fringe, and the other cover the left and back sides of his head.
<-

Add some random stitches to make different parts of the hair go in different directions (suggested stitches illustrated in pink on diagram above). Use your judgement in seeing what looks appropriate.



Cut the loops to separate the ends of hair.

Use the images below and images of David Tennant to help you shape the hair.



CONGRATS! YOU ARE DONE!



I would love to see how your own doctors turn out!

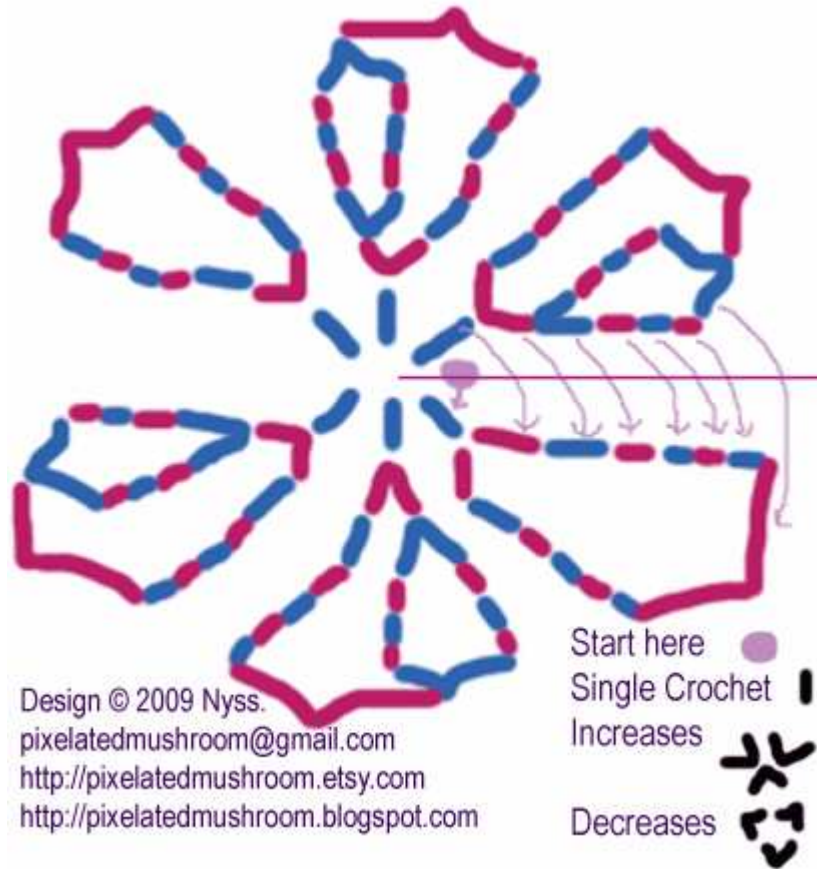
**Please send any images or comments to
pixelatedmushroom@gmail.com**

**or attach your ravelry project to
<http://www.ravelry.com/patterns/library/doctor-who-tenth>**

----- Diagrams follow on the next pages -----

Extra Diagrams

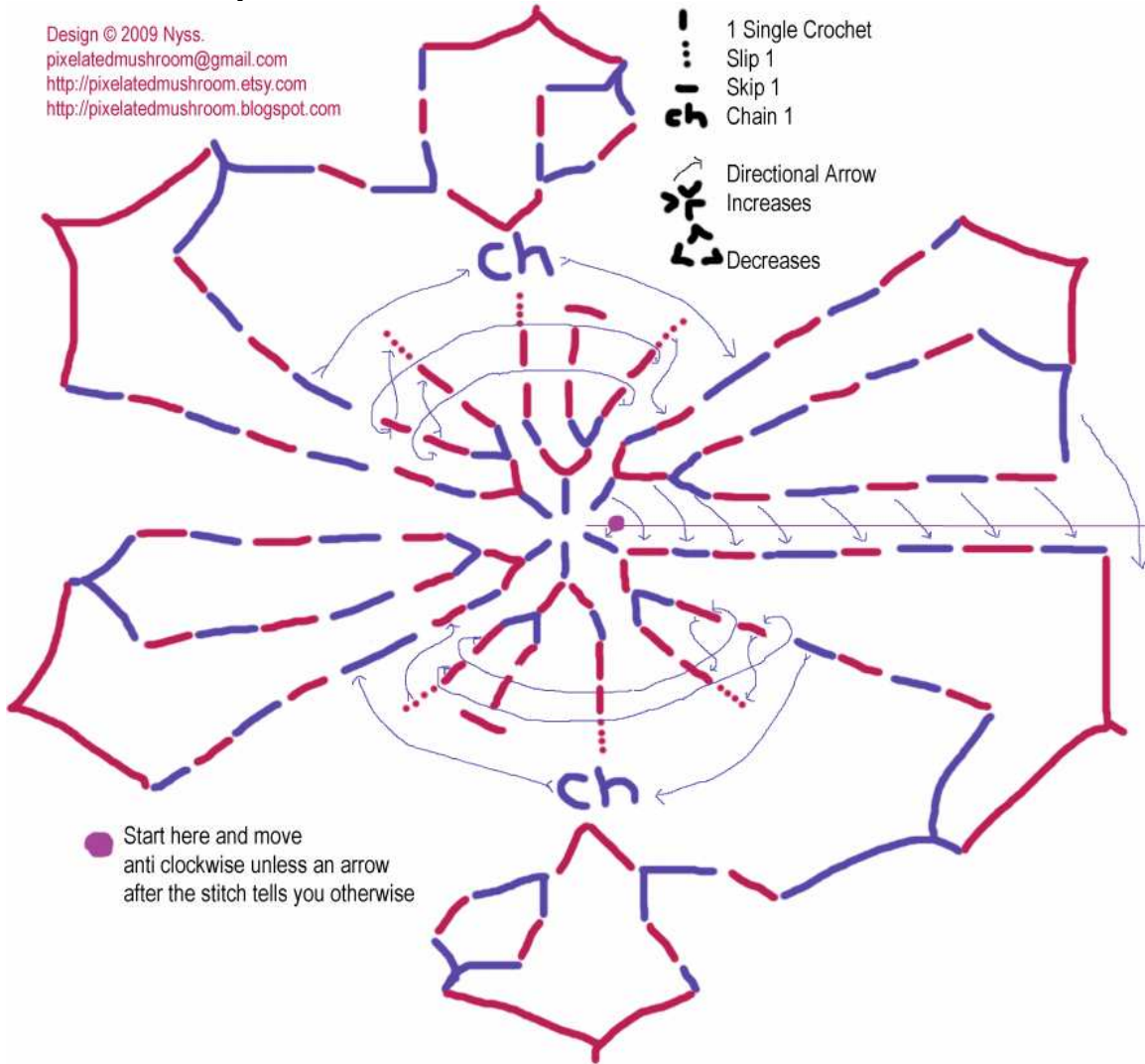
1. Doctor's Head (continues onto diagram 2)



Design © 2009 Nyss.
 pixelatedmushroom@gmail.com
<http://pixelatedmushroom.etsy.com>
<http://pixelatedmushroom.blogspot.com>

2. Doctor's Body

Design © 2009 Nyss.
 pixelatedmushroom@gmail.com
<http://pixelatedmushroom.etsy.com>
<http://pixelatedmushroom.blogspot.com>



3. Doctor's Coat

Design © 2009 Nyss.
 pixelatedmushroom@gmail.com
<http://pixelatedmushroom.etsy.com>
<http://pixelatedmushroom.blogspot.com>

